



In operation since Fall 1998, Metropolitan's Union Station headquarters houses more than 900 employees. Its proximity to a major transportation hub has triggered a surge in ridesharing among MWD staff.

**THE METROPOLITAN WATER DISTRICT
OF SOUTHERN CALIFORNIA**

ANNUAL REPORT FOR THE FISCAL YEAR

July 1, 2006 to June 30, 2007



LOS ANGELES, CALIFORNIA
2007

CONTENTS

<i>Chapter</i>	<i>Page</i>
List of Abbreviations	ix
Directors	xii
Board of Directors	xvi
Historical Roll of Directors.....	xx
Staff	xxxiii
Introduction	1
1. Delivering Metropolitan’s Water Supplies	5
Major Accomplishments for Fiscal Year 2006/07	7
State Water Project	7
Colorado River	7
System Operations and Planning	8
2. Water Resource Management	21
State Water Project Resources	21
Bay-Delta Program	21
Water Transfers and Exchanges.....	25
Semitropic/Metropolitan Water Banking and Exchange Programs.....	25
Arvin-Edison Water Management Programs	25
San Bernardino/Metropolitan Coordinated Operating Agreements	25
Kern Delta/Metropolitan Water Management Program	26
Mojave/Metropolitan Demonstration Water Exchange Program	26
Colorado River Resources	26
Water Transfers and Exchanges.....	27
Local Resources.....	31
Water Recycling and Groundwater Recovery.....	31
Groundwater Storage	32
Conservation and Water-Use Efficiency.....	33
Water Resource and System Analysis	34
Resource Analysis	34
Integrated Area Study	36
3. Water System Operations	41
Water Treatment	41
Water Quality	42
Legislation and Regulations.....	42
Water Quality Monitoring.....	43
Compliance.....	43
Chemical/Physical	43
Total Dissolved Solids	44
Disinfection Byproducts	61
Microbiological.....	61
Treatment.....	62
System Management and Pathogen Monitoring	70
Algae Control Program.....	70
Quagga Mussel Control Program.....	70
Pathogen Monitoring Program.....	70
Cross-Connection Program.....	76

CONTENTS

<i>Chapter</i>	<i>Page</i>
Water Quality Issues.....	76
Uranium Mill Tailings.....	76
Topock Chromium VI Remediation Project.....	76
Perchlorate.....	77
Pharmaceuticals and Personal Care Products.....	77
N-Nitrosodimethylamine.....	77
Fluoridation.....	77
Watershed and Water Supply.....	81
Watershed and Source Water Protection.....	81
Pump-in Programs and Water Banking.....	81
Technology Assessment.....	83
Treatment Process Optimization and Development.....	83
Desalination Research and Innovation Partnership (DRIP).....	83
Funded Projects.....	83
Service to Member Agencies and Drinking Water Industry.....	86
Security and Emergency Response.....	86
Conveyance, Distribution and Support.....	88
Conveyance and Distribution.....	88
Operations Support Services.....	88
Security and Emergency Management.....	89
Energy Management.....	90
Colorado River Aqueduct Power.....	90
Alternative Renewable CRA Energy Resource Options.....	90
State Water Project Power.....	90
Energy Management Program.....	90
Hydroelectric Power Recovery Plant Operations.....	91
Apprenticeship Program.....	96
Environmental Health and Safety.....	96
Training.....	97
4. Corporate Resources.....	101
Capital Investment Plan.....	101
Engineering Services.....	103
Inland Feeder.....	103
Oxidation Retrofit Program.....	116
Energy Management.....	117
Integrated Area Studies.....	117
Skinner Expansion No. 4.....	118
Infrastructure Protection.....	118
Environmental Planning.....	119
Information Technology.....	120
PC Replacement.....	120
Enhanced Cybersecurity.....	120
SMART Operations.....	120
Asset Upgrades and Replacements.....	121
Enterprise Geographic Information System.....	121
Integrated Budget Management.....	122

CONTENTS

<i>Chapter</i>	<i>Page</i>
Business Services	122
Business Process Sustainability	122
Purchasing and Warehousing Process Improvements.....	123
Public Agency Procurement Forum	123
National Institute of Governmental Purchasing Award of Excellence.....	123
Warehouse Operations	124
Electronic Auctions	124
Increased Customer Communication	124
5. Legal	127
Major Events.....	127
Colorado River	127
State Water Project	128
Water Quality	129
Construction Projects.....	130
Energy.....	130
Human Resources	131
Finance	132
Administration	132
6. Finance	135
Chief Financial Officer.....	135
FY 2006/07 Major Financial Activities and Accomplishments	136
Security Sales/Debt Administration.....	136
Treasury Operations.....	137
Accounting Operations	137
Budget and Financial Planning	138
Business Continuity	138
Financial Information	139
Revenues.....	139
Expenses	142
Debt Financing.....	144
Budget Process.....	144
Treasury Operations and Cash Management	145
7. Administrative	155
Human Resources.....	155
Highlights for Fiscal Year 2006/07.....	155
Office of the Human Resources Manager	155
Employee Relations	156
Equal Employment Opportunity	156
Risk Management	156
Benefits.....	157
Training and Organizational Effectiveness	157
Classification and Compensation	157
Staffing	158
Real Property Development and Management	158
Real Property Database.....	158

CONTENTS

<i>Chapter</i>	<i>Page</i>
Diamond Valley Lake Visitors	159
Business Outreach	160
Office of the Board of Directors	161
Highlights for Fiscal Year 2006/07.....	161
Board of Directors Retreat	161
Chairman’s Bike Ride at Diamond Valley Lake.....	162
General Administration.....	162
Inspection Trip Program	162
8. External Affairs	165
Legislative Services.....	166
Customer and Community Services	167
Conservation and California Friendly Programs.....	168
Community Partnering Program.....	169
Educational Programs.....	169
Media Services	171
Press Office	171
Publications	172
Web Services	173
9. Internal Audit	175
Major Accomplishments.....	176
Quality Assurance Activities	178
10. Ethics	181
Enforcement	182
Education.....	183
Enhancement	183

CONTENTS

Number		Page
TABLES		
1-1	Metropolitan’s Distribution System Water Treatment Plants	5
1-2	Monthly Water Sales for All Member Agencies.....	9
1-3	Historical Water Sales	10
1-4	Water Use by Metropolitan’s Member Agencies.....	11
1-5	2006-2007 Major Shutdowns & Service Interruptions	13
2-1	Charges, Payments & Credits under the State Water Devil Canyon-Castaic Contracts.....	23
2-2	Metropolitan’s Conjunctive Use Programs.....	33
3-1	Sample Locations for Organic Compounds	43
3-2	Trace Metals in Metropolitan Water Supplies	45
3-3	Triennial Radiological Compliance Monitoring Report	46
3-4	General Mineral and Physical Analysis of Metropolitan’s Water Supplies	47
3-5	2007 Annual Pesticide, Herbicide and Semi-Volatile Organic Compounds Results State and Federal Drinking Water Standards and Reporting Levels	48
3-6	Volatile Organic Compounds, Drinking Water Standards and Reporting Levels.....	54
3-7	Plant Effluent Total Trihalomethanes (TTHMs) Haloacetic Acids (HAA5) Results	61
3-8	Raw Water E. coli Analyses	62
3-9	Copper Sulfate Treatments to Control Taste and Odor Events in MWD Lakes	70
3-10	Distribution System N-Nitrosodimethylamine (NDMA) Levels (ng/L)	80
3-11	Active Water Quality Grants	85
3-12	Congressionally-Mandated Grants Awarded to Metropolitan.....	87
3-13	Hydroelectric Power Recovery Plants 2005–2007 Production	92
3-14	Metropolitan’s CRA Electric Energy Use.....	93
3-15	Energy Cost for Pumping Colorado River Water	93
3-16	Metropolitan’s Historical CRA Electric Energy Use, Kilowatt Hours.....	94
3-17	Accident Incidents	99
4-1	Projects Completed as of June 30, 2007 (Unaudited)	105
4-2	Major Construction Contracts in Progress as of June 30, 2007 (Unaudited)	106
4-3	Major Engineering Projects in Design	108

CONTENTS

Number		Page
--------	--	------

TABLES

6-1	Water Sales Rate Structure	141
6-2	Receipts by Source	142
6-3	Cash Expenditures	144
6-4	Summary of Changes in Net Assets.....	147
6-5	Ten Member Agencies with Largest Assessed Valuations	149
6-6	Ten-Year Summary of Assessed Valuations and Property Tax Rates	149
6-7	Ten-Year Summary of Property Tax Levies and Collections	150
6-8	Ten-Year Summary of Net Operating Income and Revenue Bond Debt Service Coverage	151
6-9	Ten Largest Water Customers	152

FIGURES

1.	Composition of the Metropolitan Water District of Southern California.....	xi
2.	Metropolitan Water District.....	xxxii
1-1	Total Water Sales for Fiscal Year 2006/07 – All Member Agencies.....	9
1-2	Monthly Water Sales for Fiscal Year 2006/07 – All Member Agencies.....	17
1-3	Comparison of Water Sales to Member Agencies for the Past Two Fiscal Years	18
2-1	Total Deliveries through SWP to MWD.....	22
2-2	Colorado River Basin	28
2-3	Colorado River Supply	29
2-4	Historical Lake Mead & Lake Powell Storage	30
2-5	Recycled Water Production	31
2-6	Recovered Groundwater Production.....	31
2-7	Precipitation.....	37
2-8	Population Growth.....	38
2-9	Metropolitan’s Actual and Projected Water Sales	39
3-1	Total Dissolved Solids in East & West Branch SWP and CRA (Lake Havasu)	59
3-2	Yearly Average TDS in Plant Effluent, FY 2006/07	60
3-3	Metropolitan’s Trihalomethane for All Plants Quarterly and Running Annual Averages.....	63
3-4	MWD’s Haloacetic Acid Distribution System-wide Quarterly and Running Annual Averages.....	64
3-5	Quarterly TOC and Bromide at Treatment Plant Influent, 2002-2007.....	65
3-6	Bromate Levels in Treatment Plant Effluent, 2003-2007	68
3-7	Coliform Positive Samples in MWD’s Drinking Water Distribution System....	69

CONTENTS

Number		Page
FIGURES		
3-8	Samples Analyzed for MIB and Geosmin in MWD’s Source and Finished Waters	71
3-9	Taste and Odor Events (>10 ng/L) in Source Water Reservoirs Caused by MIB-Producing Cyanobacteria, FY 2006/07	72
3-10	Taste and Odor Events (>10 ng/L) in Source Water Reservoirs Caused by Geosmin-Producing Cyanobacteria, FY 2006/07	73
3-10A	Copper Sulfate Usage Between 1982 and 2007 in MWD Reservoirs	74
3-11	Cross-Connection Program Backflow Prevention	75
3-12	Perchlorate Loading in Las Vegas Wash	78
3-13	Perchlorate Levels at Metropolitan’s Whitsett Intake at Lake Havasu	79
3-14	Jensen Treatment Plant Influent Average Monthly E. coli Levels	82
3-15	CRA Energy Mix 1987 to 2007	95
4-1	Ten-Year CIP 2004/05 – 2013/14	104

LIST OF ABBREVIATIONS

<i>Abbreviation</i>	<i>Term</i>
AB	Assembly Bill
AF	Acre-feet or acre-foot
AMR	Automatic meter reading
CalPERS	California Public Employees Retirement System
CFO	Chief Financial Officer
CIP	Capital Investment Plan
CPP	Community Partnering Program
CRA	Colorado River Aqueduct
CVP	Central Valley Project
CVWD	Coachella Valley Water District
CY	Calendar year
D/DBP	Disinfectants/Disinfection Byproducts
DOE	U.S. Department of Energy
DRIP	Desalination Research and Innovation Partnership
DVL	Diamond Valley Lake
DWR	Department of Water Resources
EHS	Environmental Health and Safety
EIR	Environmental Impact Report
EIS	Environmental Impact Statement
ESA	Endangered Species Act
FERC	Federal Energy Regulatory Commission
FY	Fiscal year
HAA5	Five haloacetic acids
IID	Imperial Irrigation District

LIST OF ABBREVIATIONS

<i>Abbreviation</i>	<i>Term</i>
IT	Information Technology
LEED	Leadership in Energy and Environmental Design
MAF	Million acre-feet
MIB	Methylisoborneol
NDMA	N-Nitrosodimethylamine
ORP	Oxidation Retrofit Program
PC	Personal computer
QSA	Quantification Settlement Agreement
RO	Reverse osmosis
SB	Senate Bill
SCADA	Supervisory Control and Data Acquisition System
SWP	State Water Project
SWRCB	State Water Resources Control Board
T&O	Taste and odor
TDS	Total dissolved solids
TOC	Total organic carbon
TTHM	Total trihalomethane
USEPA	U.S. Environmental Protection Agency
WRM	Water Resource Management
WSO	Water System Operations

THE METROPOLITAN WATER DISTRICT OF SOUTHERN CALIFORNIA

MUNICIPAL WATER DISTRICTS

Calleguas	Orange County
Central Basin	Three Valleys
Eastern	Upper San Gabriel Valley
Foothill	West Basin
Inland Empire	Western of Riverside County
Las Virgenes	

MEMBER CITIES

Anaheim	Glendale	San Marino
Beverly Hills	Long Beach	Santa Ana
Burbank	Los Angeles	Santa Monica
Compton	Pasadena	Torrance
Fullerton	San Fernando	

SAN DIEGO COUNTY WATER AUTHORITY

Calleguas MWD

Berylwood Heights Mutual Water
 Brandeis Mutual Water Company
 Butler Ranch Mutual Water Company
 California American Water Company
 California Water Service Co.
 Camarillo
 Camrosa Water District
 Crestview Mutual Water Company
 Golden State Water Company
 Lake Sherwood Community Services District
 Oakpark Water Service
 Oxnard
 Pleasant Valley Mutual Water Company
 Port Hueneme
 Simi Valley
 Solano Verde Mutual Water Company
 Thousand Oaks
 Ventura Co. Water Works Dist. (Nos. 1 and 19)
 Zone Mutual Water Company

Central Basin MWD

Bell Gardens
 Bellflower Water System
 Bellflowers-Somerset Mutual Water Co.
 Calif. Water Service Co. (East L.A./Commerce)
 Cerritos
 Commerce
 Downey
 Golden State Water Company
 Huntington Park
 La Habra Heights County Water District
 Lakewood
 L.A. County Rancho Los Amigos Hospital
 Lynwood
 Maywood Mutual Water Co. Nos. 1, 2 and 3
 Montebello
 Norwalk Municipal Water System
 Orchard Dale Water District
 Paramount
 Park Water Company
 San Gabriel Valley Water Company
 Santa Fe Springs
 Signal Hill
 South Gate
 Suburban Water Systems
 Vernon

Walnut Park Mutual Water Company
 Water Replenishment District of So. Cal.

Eastern MWD

Hemet
 Lake Hemet Municipal Water District
 Nuevo Water Company
 Perris
 Rancho California Water District
 San Jacinto

Foothill MWD

Crescenta Valley Water District
 La Canada Irrigation District
 Las Flores Water Company
 Lincoln Avenue Water Company
 Mesa Crest Water Company
 Rubio Canon Land & Water Assoc.
 Valley Water Company

Inland Empire Utilities Agency

Chino
 Chino Hills
 Cucamonga Valley Water District
 Fontana Water Company
 Monte Vista Water District
 Ontario
 Upland
 Water Facilities Authority

MWD of Orange County

Brea
 Buena Park
 East Orange County Water District
 El Toro Water District
 Emerald Bay Service District
 Fountain Valley
 Garden Grove
 Golden State Water Company
 Huntington Beach
 Irvine Ranch Water District
 La Habra
 La Palma
 Laguna Beach County Water Dist.
 Mesa Consolidated Water District
 Moulton Niguel Water District
 Newport Beach
 Orange

Orange County Water District
 San Clemente
 San Juan Capistrano
 Santa Margarita Water District
 Santiago County Water District
 Seal Beach
 Serrano Water District
 South Coast Water District
 Trabuco Canyon Water District
 Justin
 Westminster
 Yorba Linda Water District

San Diego County Water Authority

Carlsbad Municipal Water District
 Del Mar
 Escondido
 Fallbrook Public Utility District
 Helix Water District
 Lakeside Water District
 National City
 Oceanside
 Olivenhain Municipal Water District
 Otay Water District
 Padre Dam Municipal Water District
 Camp Pendleton Marine Corps Base
 Poway
 Rainbow Municipal Water District
 Ramona Municipal Water District
 Rincon del Diablo Municipal Water District
 San Diego
 San Dieguito Water District
 Santa Fe Irrigation District
 Sweetwater Authority
 Vallecitos Water District
 Valley Center Municipal Water District
 Vista Irrigation District
 Yuima Municipal Water District

Three Valleys MWD

Boy Scouts of America, Firestone Ranch Reserv.
 Calif. State Polytechnic Univ. or Cal Poly Pomona
 Covina
 Glendora
 Golden State Water Co. (San Dimas & Claremont)
 La Verne
 Lanterman Development Center
 Mt. San Antonio College

Pomona
 Rowland Water District
 Suburban Water Systems
 Valencia Heights Water Company
 Walnut Valley Water District

Upper San Gabriel Valley MWD

Arcadia
 Azusa
 Monrovia
 Main San Gabriel Basin Watermaster/Alhambra
 Golden State Water Company
 South Pasadena
 Suburban Water Systems
 Valley County Water District
 West Covina

West Basin MWD

California American Water Co. (L.A. Division)
 California Water Service Company
 Golden State Water Company
 El Segundo
 Inglewood
 Lomita
 Los Angeles County Waterworks District #29
 Manhattan Beach
 Water Replenishment Dist. of Southern California

Western MWD of Riverside County

Box Springs Mutual Water Company
 Corona
 Eagle Valley Mutual Water Company
 Elsinore Valley MWD
 Lee Lake Water District
 Norco
 Rancho California Water District
 Riverside

Contracting Agencies

Alhambra
 Arvin Edison
 Azusa
 Chiriaco Summit Water District
 Coachella Valley Water District
 Desert Water Agency
 San Gabriel Valley Municipal Water District
 Sierra Madre
 Western Water Company

Figure 1. Composition of the Metropolitan Water District of Southern California

DIRECTORS
JUNE 30, 2007



Chairman
Timothy F. Brick
Pasadena



Vice Chair
Marcie L. Edwards
Anaheim



Vice Chair
Anthony R. Fellow
*Upper San Gabriel
Valley Municipal
Water District*



Vice Chair
Joseph Parker
*San Diego County
Water Authority*



Secretary
Judy Abdo
Santa Monica

DIRECTORS
JUNE 30, 2007



Steve Anderson
*Municipal Water
District of
Orange County*



Robert Apodaca
*Central Basin
Municipal
Water District*



Ergun Bakall
*Municipal Water
District of
Orange County*



James M. Barrett
*San Diego County
Water Authority*



James H. Blake
Fullerton



James H. Bond
*San Diego County
Water Authority*



Glenn A. Brown
Burbank



David D. De Jesus
*Three Valleys
Municipal Water
District*



Larry D. Dick
*Municipal Water
District of
Orange County*



James T. Edwards
*Foothill Municipal
Water District*



John V. Foley
*Municipal Water
District of
Orange County*



Ted Grandsen
*Calleguas Municipal
Water District*

DIRECTORS
JUNE 30, 2007



Daniel E. Griset
Santa Ana



Aaron A. Grunfeld
Los Angeles



Isadore Hall III
Compton



Helen Z. Hansen
Long Beach



Betty H. Harris
Beverly Hills



Gene Koopman
*Inland Empire
Utilities Agency*



Edward C. Little
*West Basin Municipal
Water District*



John T. Morris
San Marino



John W. Murray Jr.
Los Angeles



Willard H. Murray Jr.
*West Basin Municipal
Water District*



**John M. "Terry"
Mylne III**
*Western Municipal
Water District of
Riverside County*



Glen D. Peterson
*Las Virgenes
Municipal Water
District*

DIRECTORS
JUNE 30, 2007



Phillip J. Pace
*Central Basin
Municipal Water
District*



W. D. "Bud" Pocklington
*San Diego County
Water Authority*



Jesús E. Quiñonez
Los Angeles



Randy A. Record
*Eastern
Municipal Water
District*



James M. Rez
Glendale



Nancy Sutley
Los Angeles



Steven Veres
San Fernando



Bill D. Wright
Torrance

BOARD OF DIRECTORS
July 1, 2006 to June 30, 2007

OFFICERS OF THE BOARD

Chairman.....	Timothy F. Brick
Vice Chair.....	Anthony R. Fellow
Vice Chair.....	Marcie L. Edwards
Vice Chair.....	Joseph Parker
Secretary.....	Judy Abdo

MEMBERS OF THE BOARD

Anaheim.....	Marcie L. Edwards
Beverly Hills.....	Betty H. Harris
Burbank.....	Glenn A. Brown
Calleguas Municipal Water District.....	Ted Grandsen
Central Basin Municipal Water District.....	Robert Apodaca
Central Basin Municipal Water District.....	Phillip J. Pace
Compton.....	Isadore Hall III
Eastern Municipal Water District.....	Randy A. Record
Foothill Municipal Water District.....	James T. Edwards
Fullerton.....	James H. Blake
Glendale.....	James M. Rez
Inland Empire Utilities Agency.....	Gene Koopman
Long Beach.....	Helen Z. Hansen
Las Virgenes Municipal Water District.....	Glen D. Peterson
Los Angeles.....	Aaron A. Grunfeld
Los Angeles.....	John W. Murray Jr.
Los Angeles.....	Jesús E. Quiñonez
Los Angeles.....	Nancy Sutley
Municipal Water District of Orange County.....	Steve Anderson
Municipal Water District of Orange County.....	Ergun Bakall
Municipal Water District of Orange County.....	Larry D. Dick
Municipal Water District of Orange County.....	John V. Foley
Pasadena.....	Timothy F. Brick

San Diego County Water Authority.....	James M. Barrett
San Diego County Water Authority.....	James H. Bond
San Diego County Water Authority.....	Claude A. “Bud” Lewis
San Diego County Water Authority.....	Joseph Parker
San Diego County Water Authority.....	W.D. “Bud” Pocklington
San Fernando	Steven Veres
San Marino.....	John T. Morris
Santa Ana.....	Daniel E. Griset
Santa Monica	Judy Abdo
Three Valleys Municipal Water District.....	David D. De Jesus
Torrance	Bill D. Wright
Upper San Gabriel Valley	
Municipal Water District	Anthony R. Fellow
West Basin Municipal Water District	Carol W. Kwan
West Basin Municipal Water District	Edward C. Little
West Basin Municipal Water District	Willard H. Murray Jr.
Western Municipal Water District	
of Riverside County	John M. Mylne III

BOARD OF DIRECTORS
MEMBERS OF STANDING COMMITTEES
June 30, 2007

EXECUTIVE COMMITTEE

Timothy F. Brick, Chair	James H. Bond
Anthony R. Fellow, Vice Chair	Glenn A. Brown
Marcie L. Edwards, Vice Chair	Isadore Hall III
Joseph Parker, Vice Chair	Gene Koopman
Judy Abdo, Secretary	Jesús E. Quiñonez
John V. Foley, Ex Officio	Nancy Sutley
Phillip J. Pace, Ex Officio	

BUSINESS AND FINANCE

James H. Bond, Chair	Gene Koopman
Aaron A. Grunfeld, Vice Chair	Willard H. Murray Jr.
Ergun Bakall	John M. Mylne III
James H. Blake	Phillip J. Pace
Isadore Hall III	Joseph Parker
Helen Z. Hansen	

COMMUNICATIONS AND LEGISLATION

Isadore Hall III, Chair	Daniel E. Griset
Steve Anderson, Vice Chair	Betty H. Harris
Judy Abdo	Edward C. Little
Robert Apodaca	Bud Pocklington
Larry D. Dick	Nancy Sutley
Marcie L. Edwards	Steven Veres
Anthony R. Fellow	

ENGINEERING AND CAPITAL PROGRAMS

Gene Koopman, Chair	John W. Murray Jr.
John T. Morris, Vice Chair	John M. Mylne III
Ergun Bakall	Phillip J. Pace
James M. Barrett	Glen D. Peterson
Marcie L. Edwards	Randy A. Record
John V. Foley	James M. Rez
Ted Grandsen	Bill D. Wright

LEGAL AND HUMAN RESOURCES

Jesús E. Quiñonez, Chair
Steven Veres, Vice Chair
Judy Abdo
Steve Anderson
David D. De Jesus
James T. Edwards
Anthony R. Fellow

John V. Foley
Helen Z. Hansen
Betty H. Harris
John W. Murray Jr.
Joseph Parker
James M. Rez

WATER QUALITY AND OPERATIONS

Glenn A. Brown, Chair
David D. De Jesus, Vice Chair
Robert Apodaca
James H. Blake
James H. Bond

Ted Grandsen
Aaron A. Grunfeld
Edward C. Little
Bud Pocklington
Bill D. Wright

WATER PLANNING AND STEWARDSHIP

Nancy Sutley, Chair
James M. Barrett, Vice Chair
Ergun Bakall
Glenn A. Brown
Larry D. Dick
James T. Edwards
Daniel E. Griset

John T. Morris
Willard H. Murray Jr.
Glen D. Peterson
Jesús E. Quiñonez
Randy A. Record
Bill D. Wright

**HISTORICAL
ROLL OF DIRECTORS
June 30, 2007**

ANAHEIM

A. W. Franzen	March 1, 1929 to April 11, 1930
O. E. Steward.....	April 18, 1930 to April 12, 1935
E. P. Hapgood.....	May 3, 1935 to June 14, 1960
Charles A. Pearson	July 12, 1960 to May 8, 1972
Keith A. Murdoch.....	June 13, 1972 to May 29, 1979
Joseph C. Truxaw	August 17, 1979 to November 20, 1990
Bob Kazarian.....	November 20, 1990 to July 12, 1994
Edward G. Alario	November 8, 1994 to April 14, 1998
S. Dale Stanton.....	April 14, 1998 to July 8, 2004
Tom Tait.....	July 8, 2004 to December 13, 2005
MARCIE L. EDWARDS	December 13, 2005 to

BEVERLY HILLS

Paul E. Schwab.....	March 1, 1929 to June 19, 1931
George R. Barker.....	June 19, 1931 to August 2, 1935
Arthur Taylor.....	August 2, 1935 to August 2, 1951
Floyd E. Fischer	August 17, 1951 to December 2, 1977
Ellen Stern Harris	January 10, 1978 to March 10, 1981
Nicholas H. Cominos.....	March 10, 1981 to September 1, 1984
Mel Odom.....	January 11, 1983 to February 14, 1984
Ina S. Roth.....	February 14, 1984 to February 11, 1992
Dan Webster.....	March 10, 1992 to September 8, 1999
BETTY H. HARRIS.....	September 8, 1999 to June 14, 2007

BURBANK

Harvey E. Bruce	March 1, 1929 to February 11, 1933
James L. Norwood.....	March 10, 1933 to April 30, 1943
	May 9, 1947 to October 13, 1953
Frank C. Tillson.....	May 14, 1943 to May 9, 1947
Walter H. Long.....	October 13, 1953 to June 13, 1961
Earle C. Blais.....	June 13, 1961 to June 11, 1985
Michael A. Nolan	June 11, 1985 to July 9, 1991
Larry L. Stamper	July 9, 1991 to June 6, 1995
Thomas H. McCauley.....	June 6, 1995 to December 16, 1998

Wayne T. McMurrayFebruary 12, 1991 to December 31, 2000
 Donald C. Simpson.....October 7, 1996 to December 9, 1996
 Langdon W. Owen.....December 9, 1996 to January 17, 2001

COMPTON

C. A. DickisonJuly 17, 1931 to January 20, 1933
 William H. FosterJanuary 20, 1933 to June 28, 1935
 Warren W. ButlerJune 28, 1935 to January 24, 1980
 Regina Murph.....March 11, 1980 to March 25, 2003
 Kenneth M. OrdunaApril 8, 2003 to January 14, 2004
 ISADORE HALL IIIFebruary 9, 2004 to

EASTERN MUNICIPAL WATER DISTRICT

Irwin E. FarrarAugust 31, 1951 to March 1, 1982
 Doyle F. Boen.....March 9, 1982 to October 11, 1994
 Chester C. Gilbert.....October 11, 1994 to June 1, 1999
 Clayton A. Record Jr.June 1, 1999 to January 9, 2001
 Marion V. AshleyJanuary 9, 2001 to January 6, 2003
 RANDY A. RECORD.....January 14, 2003 to

FOOTHILL MUNICIPAL WATER DISTRICT

Nelson HaywardFebruary 8, 1955 to July 4, 1959
 Conrad R. FantonNovember 10, 1959 to November 2, 1964
 A. B. SmedleyApril 13, 1965 to August 1, 1990
 Brooks T. MorrisSeptember 11, 1990 to November 27, 1991
 William T. O'NeilJanuary 14, 1992 to May 10, 1999
 JAMES T. EDWARDSMay 10, 1999 to

FULLERTON

Walter Humphreys.....April 10, 1931 to January 19, 1945
 H. H. KohlenbergerJuly 27, 1945 to March 7, 1959
 Hubert C. Ferry.....February 23, 1960 to February 8, 1983
 Norman L. De Vilbiss.....February 8, 1983 to April 12, 1988
 JAMES H. BLAKEAugust 23, 1988 to

GLENDALE

W. Turney Fox..... March 1, 1929 to November 27, 1931
Samuel G. McClure November 27, 1931 to January 13, 1933
Frank P. Taggart January 13, 1933 to August 31, 1934
Bernard C. Brennan August 31, 1934 to April 23, 1937
Herman Nelson June 4, 1937 to August 27, 1954
Paul L. Burkhard..... September 28, 1954 to June 10, 1958
Normal C. Hayhurst..... June 10, 1958 to June 9, 1970
Lauren W. Grayson..... June 9, 1970 to May 21, 1972
William H. Fell June 13, 1972 to July 13, 1976
C. E. Perkins July 13, 1976 to July 13, 1988
JAMES M. REZ..... August 23, 1988 to

INLAND EMPIRE UTILITIES AGENCY (formerly Chino Basin MWD)

A. C. Reynolds..... February 12, 1952 to March 12, 1963
Ray W. Ferguson March 12, 1963 to December 31, 1980
Carl B. Masingale March 10, 1981 to August 9, 1984
John G. Gilday September 11, 1984 to February 15, 1985
Edward A. Girard..... March 12, 1985 to May 31, 1990
Anne W. Dunihue September 20, 1988 to February 11, 1992
Bill M. Hill..... August 21, 1990 to February 9, 1999
Dwight F. French February 11, 1992 to August 18, 1994
Wyatt L. Troxel..... August 19, 1994 to November 14, 2003
GENE KOOPMAN..... February 9, 1999 to December 31, 2000
November 14, 2003 to

LAS VIRGENES MUNICIPAL WATER DISTRICT

Earle Brookins December 13, 1960 to March 26, 1963
A. Myron McBride..... March 26, 1963 to May 11, 1965
A. Macneil Stelle June 8, 1965 to October 23, 1967
March 11, 1975 to February 9, 1993
Whitney P. Reeve December 19, 1967 to March 11, 1975
GLEN D. PETERSON..... February 9, 1993 to

LONG BEACH

Nowland M. Reid	April 10, 1931 to January 27, 1933
W. M. Cook	January 27, 1933 to April 30, 1943
Gus A. Walker	April 30, 1943 to December 31, 1976
Lloyd C. Leedom.....	May 9, 1947 to June 30, 1979
Samuel C. Rue	October 9, 1979 to March 12, 1985
Ida Frances Lowry	March 12, 1985 to February 9, 1993
Henry J. Meyer	February 9, 1993 to August 19, 1997
HELEN Z. HANSEN	August 19, 1997 to

LOS ANGELES

John R. Haynes.....	March 1, 1929 to February 4, 1930
John R. Richards.....	March 1, 1929 to October 28, 1947
W. P. Whitsett	March 1, 1929 to January 10, 1947
John G. Bullock.....	November 1, 1929 to September 15, 1933
O. T. Johnson Jr.....	November 5, 1929 to August 29, 1930
W. L. Honnold.....	February 28, 1930 to July 21, 1933
J. Eisner	August 29, 1930 to July 2, 1937
Walter A. Ham	January 20, 1933 to January 4, 1935
D. W. Pontius	January 20, 1933 to September 3, 1955
Perry H. Greer	July 21, 1933 to August 14, 1950
V. H. Rossetti	October 13, 1933 to November 19, 1960
Otto J. Emme.....	January 11, 1935 to October 22, 1947
Louis S. Nordlinger	August 13, 1937 to June 8, 1940
Joseph Jensen	August 16, 1940 to February 3, 1944 March 8, 1946 to July 8, 1974
Ransom W. Chase	March 14, 1947 to February 11, 1975
Gordon B. Crary	March 14, 1947 to November 8, 1959
Howard D. Mills.....	March 14, 1947 to March 17, 1965
W. R. Fawcett.....	May 13, 1952 to November 27, 1953
Luther C. Anderson	January 12, 1954 to February 11, 1975
Noah Dietrich	November 8, 1955 to November 23, 1970
Ferdinand Mendenhall.....	July 29, 1958 to October 8, 1974
Ben P. Griffith	August 9, 1960 to June 7, 1961
Pietro Di Carlo.....	February 14, 1961 to November 7, 1967
William S. Peterson.....	February 14, 1961 to August 10, 1979
Aubrey E. Austin Jr.	February 28, 1961 to May 13, 1975

Albert F. Bush.....	November 14, 1961 to February 11, 1975
John W. Luhring	January 16, 1962 to August 8, 1967
Joseph M. Quinn.....	May 14, 1968 to September 18, 1973
B. Walter Hicks.....	May 8, 1973 to August 20, 1974
Samuel B. Nelson	September 18, 1973 to October 9, 1984
Katherine B. Dunlap	August 20, 1974 to September 11, 1984
Jerry Godell.....	October 8, 1974 to October 9, 1984
Edward L. Kussman.....	October 8, 1974 to November 8, 1993
Herman Leavitt	February 11, 1975 to August 19, 1975
Yolanda M. Nava	February 11, 1975 to September 14, 1976
S. Dell Scott	February 11, 1975 to October 12, 1993
Willie J. Stennis	May 13, 1975 to December 31, 1978
Mladin Zarubica.....	August 19, 1975 to March 16, 1981
Soledad S. Garcia.....	September 14, 1976 to September 11, 1984
Mark Lainer	November 13, 1979 to February 12, 1991
Mark Nathanson.....	April 14, 1981 to September 11, 1984
Michael Glazer.....	September 11, 1984 to April 9, 1991
Helen Romero Shaw	September 11, 1984 to November 8, 1993
Marilyn L. Garcia.....	October 9, 1984 to February 9, 1993
Rachel Levin	October 9, 1984 to April 4, 1989
Frank S. Wyle	October 9, 1984 to August 1, 1991
Robert Abernethy.....	April 4, 1989 to October 13, 1992
	February 9, 1993 to November 8, 1993
Vernon R. Watkins.....	February 12, 1991 to August 20, 1992
Alf W. Brandt	April 9, 1991 to February 13, 1996
Michael J. Gage	August 1, 1991 to September 21, 1993
Carolyn L. Green	August 20, 1992 to December 31, 1995
	April 30, 1996 to May 16, 1997
William G. Luddy	October 13, 1992 to May 10, 2005
George Wein	October 12, 1992 to August 20, 2002
David Y. Handelman	November 8, 1993 to November 14, 1995
Kenneth T. Lombard.....	November 8, 1993 to April 11, 1995
Katherine W. Moret	November 8, 1993 to December 31, 2000
Christopher C. Pak.....	November 8, 1993 to December 19, 1995
Bonny L. Herman.....	April 11, 1995 to April 12, 2004
Larry J. Kosmont	February 13, 1996 to December 31, 2000
Aaron E. Michaelsen.....	February 13, 1996 to January 13, 1997
L. Michael Russell	June 11, 1996 to January 12, 1998

S. David Freeman	January 12, 1998 to December 31, 2000
Ronald R. Gastelum	January 12, 1998 to November 10, 1998
Jorge G. Castro	June 7, 1999 to October 7, 2003
Deborah Dentler	August 20, 2002 to January 6, 2006
David Farrar	October 7, 2003 to January 6, 2006
Robert B. Simonds	April 12, 2004 to January 6, 2006
Ronald F. Deaton.....	May 10, 2005 to January 6, 2006
AARON A. GRUNFELD.....	January 6, 2006 to
JOHN W. MURRAY JR.	January 6, 2006 to
JESÚS E. QUIÑONEZ.....	January 6, 2006 to
NANCY SUTLEY	January 6, 2006 to

MUNICIPAL WATER DISTRICT OF ORANGE COUNTY

Glenn P. Allen	December 11, 1951 to December 17, 1986
W. B. Hellis	August 19, 1955 to February 9, 1975
William J. Teague.....	February 11, 1969 to October 10, 1972
Robert R. Dowling	September 14, 1971 to May 11, 1976
Doyle Miller	October 10, 1972 to October 31, 1987
Carl J. Kymla.....	October 9, 1973 to October 20, 1993
Philip J. Reilly	December 9, 1975 to December 8, 1978
Gerald E. Price	May 11, 1976 to December 31, 1988
M. Roy Knauft Jr.....	September 13, 1977 to January 12, 1993
Kenneth H. Witt	October 13, 1981 to December 31, 2000
William F. Davenport.....	January 13, 1987 to February 14, 1995
JOHN V. FOLEY	August 22, 1989 to
Wesley M. Bannister	January 12, 1993 to October 31, 2006
Jerry A. King	January 11, 1994 to July 21, 1999
Robert J. Huntley.....	February 14, 1995 to October 31, 1999
Peer A. Swan	August 31, 1999 to June 30, 2002
Ed Royce Sr.....	February 7, 2000 to December 31, 2000
Langdon W. Owen.....	January 17, 2001 to April 24, 2003
ERGUN BAKALL	July 1, 2002 to
LARRY D. DICK.....	August 12, 2003 to
STEVE ANDERSON.....	January 30, 2007 to

PASADENA

Franklin Thomas March 1, 1929 to August 27, 1952
Morris S. Jones September 16, 1952 to October 10, 1961
Robert B. Diemer January 16, 1962 to October 27, 1966
Don C. McMillan January 10, 1967 to October 26, 1975
Karl A. Johnson December 9, 1975 to April 11, 1980
Martin Goldsmith July 8, 1980 to June 11, 1985
TIMOTHY F. BRICK June 11, 1985 to

SAN DIEGO COUNTY WATER AUTHORITY

Fred A. Heilbron January 10, 1947 to February 14, 1973
J. L. Burkholder January 24, 1947 to April 6, 1953
Richard S. Holmgren August 11, 1953 to February 19, 1963
J. William Fisher April 12, 1955 to October 11, 1955
Hans H. Doe August 20, 1959 to October 20, 1986
Paul Beermann February 19, 1963 to July 9, 1963
Harry Griffen February 19, 1963 to October 13, 1997
George R. Henderson August 13, 1963 to November 29, 1964
Ralph E. Graham September 14, 1971 to January 14, 1975
August 17, 1979 to June 28, 1982
Raymond E. Badger September 18, 1973 to May 14, 1979
Lloyd L. Lee November 20, 1973 to December 31, 1980
John M. Cranston January 14, 1975 to December 31, 1986
John P. Starkey January 13, 1981 to March 12, 1992
Michael D. Madigan August 18, 1982 to October 13, 1992
Francesca M. Krauel November 8, 1983 to August 20, 2001
John F. Hennigar November 18, 1986 to October 31, 1989
Dale Mason January 13, 1987 to February 8, 1999
Herbert H. Stickney November 14, 1989 to April 13, 1993
Christine M. Frahm April 14, 1992 to March 12, 1999
John M. Leach October 13, 1992 to October 25, 1993
JOSEPH PARKER April 13, 1993 to January 11, 1999
June 7, 1999 to
Mark W. Watton December 13, 1993 to January 12, 1998
February 8, 1999 to May 14, 2001
Gordon W. Tinker October 12, 1997 to December 31, 2000
Claude A. "Bud" Lewis January 12, 1998 to December 7, 2006

James F. TurnerJanuary 11, 1999 to December 31, 2000
 February 10, 2003 to August 17, 2004
 Harold W. BallMay 14, 2001 to February 10, 2003
 George I. Loveland.....October 15, 2001 to November 1, 2006
 W.D. “BUD” POCKLINGTON ...August 17, 2004 to
 JAMES H. BONDNovember 1, 2006 to
 JAMES M. BARRETT.....December 7, 2006 to

SAN FERNANDO

Neville R. Lewis.....December 14, 1971 to August 21, 1984
 Pat J. Modugno.....August 21, 1984 to August 8, 1986
 Doude WysbeekDecember 9, 1986 to June 10, 1997
 Sergio Rascon.....June 10, 1997 to July 7, 2000
 Hugo C. MejiaJuly 7, 2000 to November 8, 2004
 STEVEN VERESNovember 8, 2004 to

SAN MARINO

Harry L. Heffner.....March 1, 1929 to September 29, 1933
 John H. RambozSeptember 29, 1933 to November 18, 1960
 Howard A. MillerJanuary 10, 1961 to April 26, 1975
 Preston Hotchkis.....June 10, 1975 to September 10, 1986
 Preston B. HotchkisMarch 10, 1987 to March 13, 1990
 JOHN T. MORRISMarch 13, 1990 to

SANTA ANA

S.H. Finley.....March 1, 1929 to April 10, 1942
 A. H. AllenApril 10, 1942 to December 10, 1968
 Howard W. Crooke.....December 10, 1968 to September 1, 1977
 John Garthe.....November 8, 1977 to July 9, 1991
 Daniel H. Young.....July 9, 1991 to December 31, 1993
 Lee Harry.....February 8, 1994 to April 8, 1997
 Thom Coughran.....April 8, 1997 to February 3, 2005
 DANIEL E. GRISET.....February 3, 2005 to

SANTA MONICA

George H. Hutton..... March 1, 1929 to January 16, 1931
Arthur A. Weber January 16, 1931 to October 12, 1934
William H. Carter February 15, 1935 to March 13, 1936
Edmond S. Gillette..... June 12, 1936 to January 8, 1937
Arthur P. Creel..... January 8, 1937 to March 3, 1941
Samuel G. McClure March 21, 1941 to November 14, 1947
Samuel J. Crawford..... December 5, 1947 to September 15, 1959
Mark T. Gates January 12, 1960 to July 12, 1972
Francis A. Goplen August 18, 1972 to December 9, 1980
Robert Gottlieb December 9, 1980 to December 8, 1987
Christine E. Reed March 8, 1988 to April 24, 1996
JUDY ABDO June 11, 1996 to

THREE VALLEYS MUNICIPAL WATER DISTRICT

Hugh W. Stiles..... December 8, 1950 to December 31, 1961
Arthur H. Cox January 16, 1962 to April 16, 1974
William C. Leech..... April 16, 1974 to February 9, 1982
William H. Koch..... February 9, 1982 to February 12, 1985
Mel Harper..... February 12, 1985 to February 18, 1986
Richard W. Hansen June 10, 1986 to August 20, 1991
Bruce R. J. Milne August 20, 1991 to February 10, 1997
Henry S. Barbosa February 10, 1997 to February 20, 2002
DAVID D. DE JESUS March 8, 2002 to

TORRANCE

John Dennis..... March 17, 1931 to April 14, 1933
J. R. Jensen..... April 14, 1933 to December 31, 1933
Charles T. Rippy January 19, 1934 to August 8, 1950
George W. Stevens..... September 22, 1950 to June 13, 1961
George A. Bradford June 13, 1961 to October 13, 1964
George Vico..... November 17, 1964 to August 13, 1968
Ben Haggott August 13, 1968 to November 14, 1982
Marvin Brewer March 8, 1983 to November 27, 1993
BILL D. WRIGHT..... March 8, 1994 to

UPPER SAN GABRIEL VALLEY MUNICIPAL WATER DISTRICT

J. Ercel Cleminson.....April 9, 1963 to January 30, 1964
Howard H. Hawkins.....April 9, 1963 to December 31, 1989
February 9, 1993 to March 4, 1997
Frank E. Vachon.....March 10, 1964 to March 10, 1970
Robert T. Radford.....March 10, 1970 to December 31, 1970
Travis L. Manning.....January 12, 1971 to December 31, 1978
Burton E. Jones.....January 9, 1979 to February 9, 1993
John E. MauldingJanuary 9, 1990 to February 9, 1993
ANTHONY R. FELLOWFebruary 9, 1993 to
Frank F. Forbes.....March 4, 1997 to December 31, 2000

WEST BASIN MUNICIPAL WATER DISTRICT

Robert E. Austin.....August 20, 1948 to October 21, 1968
Ben Haggott.....March 10, 1953 to October 8, 1956
W. C. FarquharAugust 19, 1955 to July 13, 1976
T. V. TallonAugust 9, 1960 to April 9, 1963
Louis J. Alexander.....August 13, 1963 to March 30, 1972
Charles D. BarkerSeptember 10, 1963 to December 31, 2000
Einar C. Matson.....November 12, 1968 to February 12, 1984
Lester E. CarlsonOctober 8, 1974 to September 2, 1988
E. L. BalmerAugust 19, 1976 to May 23, 1989
Harold E. CrozierOctober 25, 1988 to April 9, 1991
Charles L. Stuart.....July 11, 1989 to April 11, 1995
Robert GoldsworthyApril 9, 1991 to March 8, 1994
EDWARD C. LITTLEMarch 8, 1994 to January 12, 1998
January 5, 1999 to September 5, 2001
April 9, 2007 to
Bondie O. Gambrell.....April 11, 1995 to February 10, 1997
Mark S. DymallyFebruary 10, 1997 to January 5, 1999
Carol W. Kwan.....January 12, 1998 to January 5, 1999
September 5, 2001 to April 9, 2007
WILLARD H. MURRAY JR.January 5, 1999 to

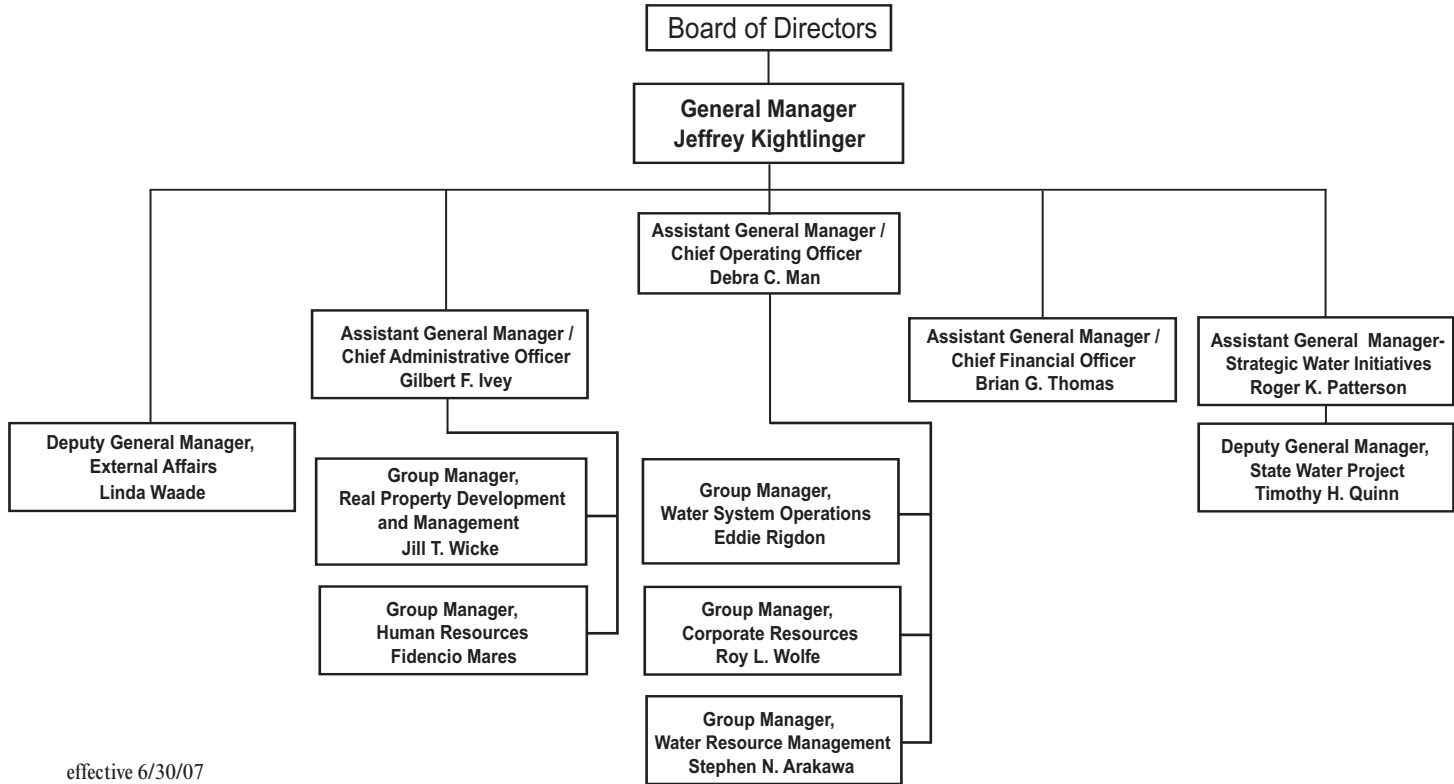
WESTERN MUNICIPAL WATER DISTRICT OF RIVERSIDE COUNTY

Howard Boylan December 14, 1954 to July 13, 1976
Lois B. Krieger August 19, 1976 to December 31, 2000
JOHN M. MYLNE III..... October 12, 1993 to

Notes:

Current Directors' names are shown in capital letters.

METROPOLITAN WATER DISTRICT



IXXX
:.

effective 6/30/07

Figure 2.

STAFF
June 30, 2007

EXECUTIVE MANAGEMENT

General Manager	J. Kightlinger
General Counsel	K. Tachiki
General Auditor	G.C. Riss
Ethics Officer	D. Elliott
Assistant General Manager/Chief Operating Officer	D. Man
Assistant General Manager/Chief Administrative Officer	G.F. Ivey
Assistant General Manager/Chief Financial Officer	B.G. Thomas
Assistant General Manager/Strategic Water Initiatives.....	R.K. Patterson
Deputy General Manager, State Water Project	T.H. Quinn
Deputy General Manager/Group Manager	L. Waade

AUDIT

Assistant General Auditor	L.M. Gagliano
---------------------------------	---------------

CHIEF ADMINISTRATIVE OFFICER

Group Manager, Real Property Development & Management	J.T. Wicke
Group Manager, Human Resources	F. Mares
Manager, Business Outreach Section	J. Arena

CHIEF FINANCIAL OFFICER

Manager, Treasury Debt Management Section	K.R. Norris
Controller	T. DeBacker

CORPORATE RESOURCES

Group Manager	R. Wolfe
Assistant Group Manager/Chief Engineer.....	G. Johnson
Manager, Engineering Services Section.....	W. Lieu
Manager, Information Technology Section.....	D. Edwards
Manager, Business Services Section.....	A. Kokuga
Manager, Project Coordination Office	T. Tellers

EXTERNAL AFFAIRS

State Legislative Representative	K. Cole
Federal Legislative Representative	B.L. Hiltcher
Manager, Media Services Section	D. Wolcott
Manager, Special Projects	T. Worley
Manager, Legislative Services Section	C. Neal
Manager, Customer & Community Services Section.....	Y.L. Martinez

STAFF
June 30, 2007

LEGAL

Assistant General Counsel H.S. Barbosa
Assistant General Counsel S.B. Bennion

WATER RESOURCE MANAGEMENT

Group Manager S.N. Arakawa
Manager, Resource Implementation Section..... A. Sienkiewich
Manager, Resource Planning & Development G.L. Chan

WATER SYSTEM OPERATIONS

Group Manager E. Rigdon
Assistant Group Manager S.O. Chapman
Assistant Group Manager J. Green
Manager, Operations & Maintenance Section..... M. Morel
Manager, Water Quality Section M. Stewart
Manager, Operations & Planning Section L.L. Shraibati
Manager, Conveyance & Distribution Section..... B. Pecsí
Manager, Water Treatment Section..... B. Coffey
Manager, Environmental Health & Safety Section B. Becker